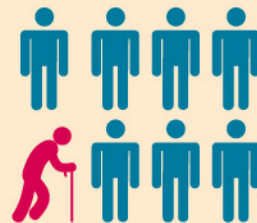


# Hong Kong is Growing old

Hong Kong is facing a major population problem — an **ageing population**<sup>1</sup>. As people are living longer, there are more and more old people in the society. The **proportion**<sup>2</sup> of our population **aged**<sup>3</sup> 65 and above will **double**<sup>4</sup> to 31% by 2036.



At present, one out of eight people in Hong Kong are over 65 years old.



It is estimated that by 2036, only half of Hong Kong's residents will stay in the **workforce**<sup>13</sup>.

The government is facing great **economic pressure**<sup>5</sup>. **Healthcare**<sup>6</sup> and housing are two large areas the government has to focus on. As people get older, the needs for hospital beds and **medication**<sup>7</sup> will increase **dramatically**<sup>8</sup>. Also more **elderly homes**<sup>9</sup> will have to be built.

To solve the issue, the government has suggested **extending**<sup>10</sup> the **retirement**<sup>11</sup> age so that people can work longer. Young couples are encouraged to have more children in order to **balance out**<sup>12</sup> the proportion.



## Vocabulary

1. ageing population 老化的人口
2. proportion 比例
3. aged 年齡為
4. double 變為兩倍
5. economic pressure 經濟壓力
6. healthcare 保健服務
7. medication 醫藥
8. dramatically 驚人地
9. elderly home 老人院舍
10. extend 延長
11. retirement 退休
12. balance out 抵銷
13. workforce 勞動力