

3

Revising



After checking the first draft, it is time to write the second draft. Read the tip boxes carefully. They will give you much help on writing up the second draft!

W

State the **full name** of the role model for the first time.

Second Draft

A Beautiful Heart

Kelly Chen is a widely admired singer and actress. Her charity work is impressive too. ~~Her brother, Victor Chen, was also a singer. He acted in many TV series, like *First Love*, and in films such as *Dread Hotel*.~~

I

Cross out these sentences if they are **not relevant**.

O

Use a **connective** to link up these two sentences.

Kelly was born in 1973 in Hong Kong. She went to senior secondary school in Japan. Later, she studied graphic design in New York because she likes drawing. Besides drawing, she likes listening to music.

W

Check the **subject-verb agreement** and write the correction in the blank.

In 1995, Kelly appeared in a film called *Whatever Will Be, Will be* and sang the film's theme song. Since then, Kelly ~~have~~ has released over 30 albums which include

S

Add a **noun** to complete the sentence.

Cantonese, Mandarin and Japanese songs. Many

I

Why has she won so many music awards?

of her songs are very popular so she has won a lot of music awards like 'The Most Popular Female Singer'. She is also successful in her acting career. She has starred in more than 20 films!



Kelly is more than just a pop star. She has given free concerts to children and helped environmental organisations.

After many years of serving charitable groups,

Kelly started her own charity in 2002—Kelly Chen Children Education Fund, which raises money to help poor children

In 2004, she was awarded the 'Ten Outstanding Young

Persons of the World' because of her

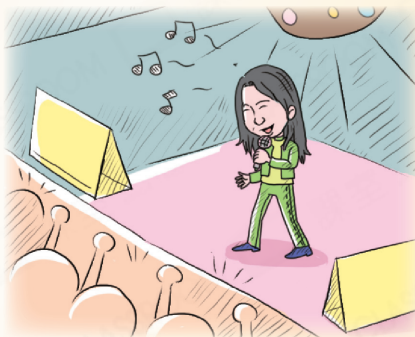
contribution to children's charity work.

Many people learn from Kelly because she is hard-working and caring. Although she is always busy, but she keeps trying to improve herself by learning new things

Besides, she always helps people in need

Kelly Chen is such a good example of love and compassion.

Her beautiful heart will always inspire people.



I
What kind of **groups** does she serve?

I
What does the charity **do**?

W
A **preposition** is missing. What is it?

S
Can you put 'although' and 'but' in the same sentence? If not, cross out either one.

I
What does she do to **improve** herself?

I
Give an **example** to show that she is **caring**.